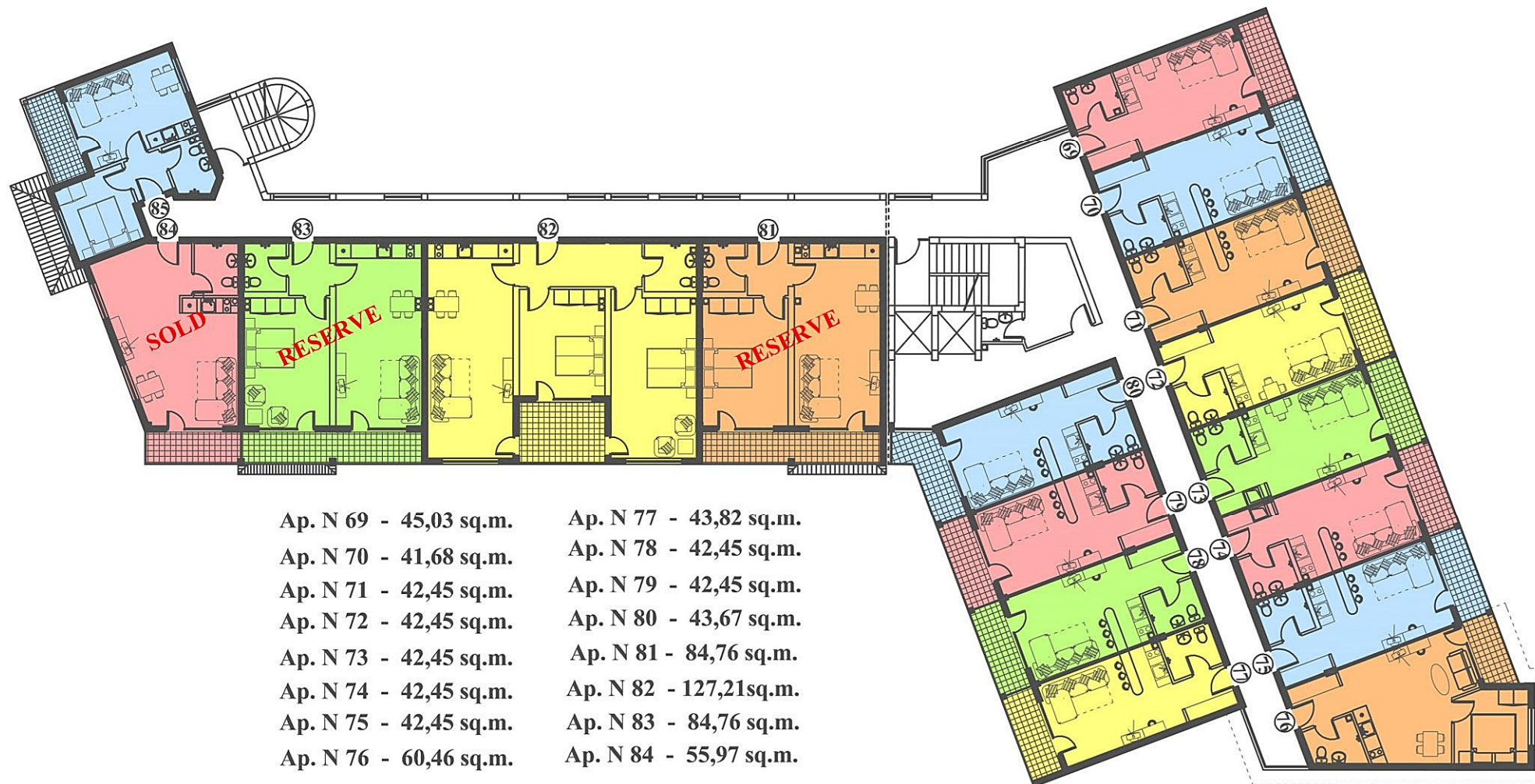
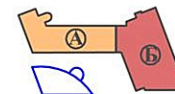




# Floor V



- |                        |                        |
|------------------------|------------------------|
| Ap. N 69 - 45,03 sq.m. | Ap. N 77 - 43,82 sq.m. |
| Ap. N 70 - 41,68 sq.m. | Ap. N 78 - 42,45 sq.m. |
| Ap. N 71 - 42,45 sq.m. | Ap. N 79 - 42,45 sq.m. |
| Ap. N 72 - 42,45 sq.m. | Ap. N 80 - 43,67 sq.m. |
| Ap. N 73 - 42,45 sq.m. | Ap. N 81 - 84,76 sq.m. |
| Ap. N 74 - 42,45 sq.m. | Ap. N 82 - 127,21sq.m. |
| Ap. N 75 - 42,45 sq.m. | Ap. N 83 - 84,76 sq.m. |
| Ap. N 76 - 60,46 sq.m. | Ap. N 84 - 55,97 sq.m. |
| Ap. N 85 - 54,55 sq.m. |                        |